

HCL300A

CNC LATHE



High precision thermal symmetry

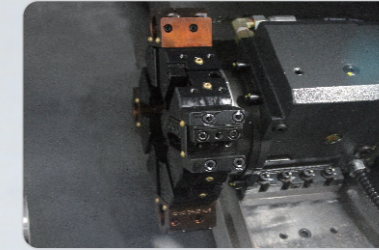
- Adopts 45° slant bed, high rigidity and large chip removal space.
- Adopts high precision spindle unit (Headman homemade).
- High class LM guideway and ballscrew .
- Adopts high resolution magnetic induction spindle encoder .
- Optionally high rigidity , high power spindle (A2-6 spindle) .
- Higher and more stable machining precision .
- Adopts GSK980TB3i or GSK988TA control system .
- Reserve automation interface , convenient for automation line set up .
- Centralized lubrication system ensures long life span of motion parts .

Optional Accessories

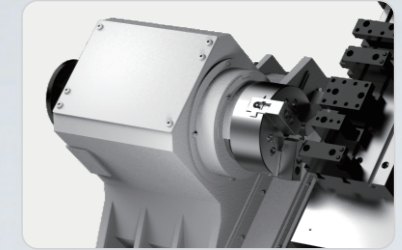
HCL300A has various optional accessories, not only full-fits processing technological base requirements, but also provides more efficient configuration.



hydraulic chuck



4/8 positions electric turret



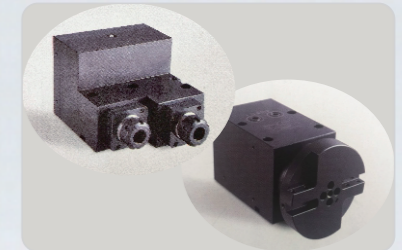
A2-6 spindle



chip conveyor



index chuck



live tool / fly cutter tool

HCL300A Product parameter

Remark : The catalogue is only for reference . Due to possibility of technology improvements , all the specification and design are subject to change without prior - notice .

Item	Unit	Parameter
Capacity	Max . swing diameter over bed	mm Φ 520
	Max . swing diameter over slide	mm Φ 160
	Max . turning diameter (disk)	mm Φ 380
	Max . machining length	mm 300
	Max . bar through diameter	mm Φ 35
Spindle	Spindle bore	mm Φ 44
	Spindle nose	A2-5
	Spindle speed	r/min 4000
	Clamping type	hydraulic
Turret	Turret type and tools number	gang type tool
	OD . tool size	mm □20×20
	Boring tool size	mm Φ 25
X / Z axis	X / Z axis travel	mm X: 400/Z: 350
	X / Z axis rapid feed	mm/min 16000/18000
Motor	Main motor power	kW 5.5
	X / Z axis driver motor toque (power)	Nm 6/6
	Coolant pump power	W 370
Weight Size	Net weight (approximate)	kg 2250
	Length X width X height	mm 2180×1600×1810



บริษัท สุทอง แมชชีนเนอรี จำกัด

SUTHONG MACHINERY CO., LTD.

572 ถนนพระรามที่ 2 แขวงสามตำบลบางขุนเทียน กรุงเทพฯ 10150
572 Rama2 Rd., Samaedum, Bangkhunthian, Bangkok 10150
TEL: 02-896-1818 FAX: 02-896-1918
E-mail: sales@suthong.co.th Website: www.suthong.co.th