



## CNC Lathe Machine

### YLM-6 / 8A Series



**YLM-6**



**YLM-8A**

- Spindle speed : 6000/4500 rpm
- Spindle speed (full power output) : 750/563 rpm
- Swing over bed : 460 mm
- Max turning length : 412/400 mm

### YLM-8B / 10A Series



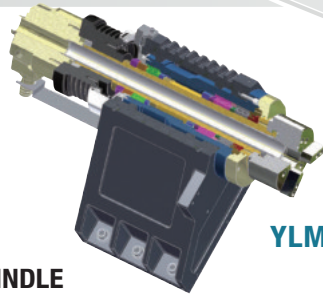
**YLM-8B**



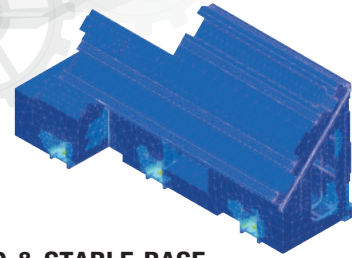
**YLM-10A**

- Spindle speed : 4500/3500 rpm
- Spindle speed (full power output) : 375/233 rpm
- Swing over bed : 700 mm
- Max turning length : 600/586 mm

## FEATURE



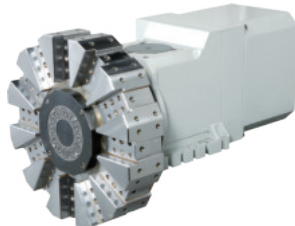
YLM-8A



YLM-10A

### RIGID & PRECISE SPINDLE

- The maximum spindle speed is up to 6000 rpm.
- Spindle front slide is specially adopted large diameter roller bearings and angular contact ball bearing to achieve the best cutting capacity. There's optimal span and balancing support between the front and rear roller bearings. This design resists the radial load and provides excellent cutting condition in high and low speed.
- Strong headstock utilizes heat symmetrical and dissipation slot design to reduce thermal deformation value and raise stable cutting accuracy.

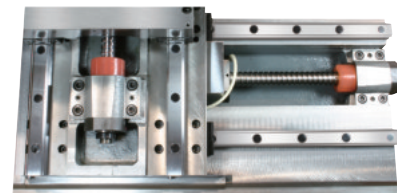


### HIGH SPEED SERVO TURRET

- The turret rotation and indexing is driven by a powerful servo motor which provides accurate positioning, fast and stable tool change.
- Servo turret deploys three curvic couplings clutch and hydraulic clamping system to gain high torque output and low noise.

### RUGGED & STABLE BASE

- The powerful one-unity-shaped base structure is professionally developed by 3D-CAD and FEM analysis to let the inner walls be perfectly strengthened with rigid ribs. It increases whole machine's rigidity and stability, keeps long term of reliable cutting accuracy and extends tooling life.
- Low gravity center of 45° slant bed design makes chips remove easily, load and unload conveniently. It also boosts machining capacity and decreases deformation.



YLM-8A

### HIGH PRECISION BALL SCREW & LINEAR GUIDE

- Heat treatment and precision ground ball screw assures excellent and longer sustained accuracy. Each axis has pre-extension design which offers greater machining rigidity and reliability.
- Latest and durable linear guide provides smooth and fast movement.
- 30 m/min.(1181ipm) rapid traverse reduces non-cutting time and increases productivity.

## MACHINE SPECIFICATION

ITEMS	SPECIFICATION	YLM-6	YLM-8A	YLM-8B	YLM-10A
Capacity	Swing over bed	Ø 460 mm (Ø18.1")		Ø 700 mm (Ø27.6")	
	Swing over cross slide	Ø 208 mm (Ø8.2")		Ø 495 mm (Ø19.5")	
	Std. turning dia.	Ø 200 mm (Ø7.9")		Ø 495 mm (Ø19.5")	
	Max turning dia.	Ø 400 mm (Ø15")		Ø 490 mm (Ø20.7")	
	Max turning length	412 mm (Ø16.2")	400 mm (Ø15.7")	600 mm (23.6")	586 mm (23")
Travel	Distance between center	490 mm (Ø19.3")		710 mm (28")	
	X axis	210 (200+10) mm / 8.3"(7.9"+0.4")		260 (235+25) mm/10.2"(9.3"+0.9")	
	Z axis	412 mm (Ø16.2")	400 mm (Ø15.7")	600 mm (23.6")	586 mm (23")
	Guide way	Linear guides		Linear guides	
Spindle	Spindle nose	A2-5	A2-6	A2-6	A2-8
	Spindle bearing dia.	Ø 90 mm (Ø3.5")	Ø 100 mm (Ø3.9")	Ø 100 mm (Ø3.9")	Ø 130 mm (Ø5.1")
	Max Spindle speed	6000 rpm	4500 rpm	4500 rpm	3500 rpm
	Spindle bore	56 mm (2.2")	62 mm (2.4")	62 mm (2.4")	90 mm (3.5")
	Draw tube bore	45 mm (1.77")	52 mm (2")	52 mm (2")	75 mm (3")
	Chuck size	6 inch / 3-Jaw	8 inch / 3-Jaw	8 inch / 3-Jaw	10 inch / 3-Jaw
Turret	Turret type	mm/inch		mm/inch	
	Driven way	servo motor		servo motor	
	No. of tool	12 / 10 (opt.)		12	
	Tool shank size	□20 mm (□0.79") / □25 mm (□0.98") (opt.)		□25 mm (□0.98")	
Tailstock	Max. boring bar dia.	Ø 25 mm / Ø 40 mm (opt.)		Ø 40 mm (Ø1.57")	
	Driven way	Programmable hydraulic		Programmable hydraulic	
	Guide way	Linear guides		Linear guides / Square way (opt.)	
	Center MT#	MT#4		MT#4	MT#5
Feedrate	Travel	405 mm (15.9")		680 mm (26.7")	
	X/Z axis rapid feedrate	30 m/min. (1181 ipm)		30 m/min. (1181 ipm)	
	Cutting feedrate	1260 mm/min.(49.6 ipm)		1260 mm/min.(49.6 ipm)	
Servo Motor	Spindle motor (P-type)	9/11 kW		11/15 kW	15/18.5 kW
	Spindle speed (full power output)	750 rpm	563 rpm	375 rpm	233 rpm
	Axis motor	X:1.2 kW, Z:1.8 kW		X:3.0 kW, Z:3.0 kW	
	Servo motor	500 W (0.67hp)		850 W (1.1hp)	
CNC Controller		FANUC OiT		FANUC OiT	
	Chip conveyor motor	188 W(0.25hp)		188 W(0.25hp)	
	Coolant pump motor	700 W(0.93hp)		700 W(0.93hp)	
	Hydraulic pump motor	1510 W(2hp)		1510 W(2hp)	
Dimension	Floor space (L x W x H)	2400x1610x1850mm (119.3" x 63.4"x88.2")		2950x1890x1990mm (116.1" x 74.4" x 78.3")	
	Net weight	3000kgs (6600 lbs)		4650kgs (10230 lbs)	

To keep improvement new design, the specifications will change without prior notice.